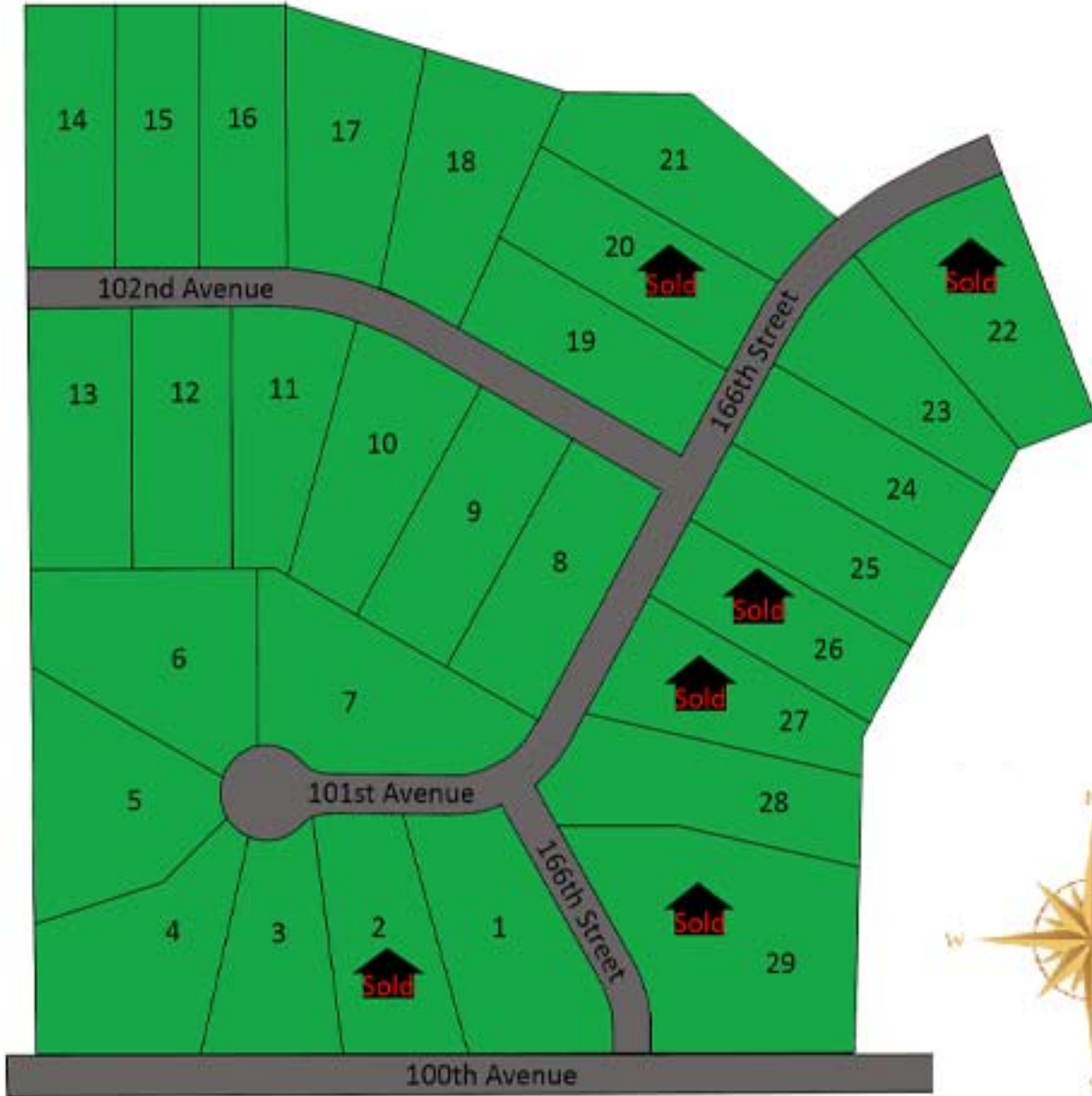




Directions:

East on I-94 to exit #10 to Roberts/New Richmond. Go North on Highway 65 to Highway 12. Head East on Highway 12 to 160th Street. Go North on 160th Street to 100th Avenue. East on 100th Avenue to 166th Street. Go North on 166th Street to entrance.



Lot Number	Price	Lot Number	Price	Lot Number	Price
1	\$33,900	10	\$33,900	18	\$32,900
3	\$31,900	12	\$26,900	19	\$28,900
4	\$33,900	13	\$28,900	21	\$32,900
5	\$26,900	14	\$27,900	24	\$25,900
6	\$28,900	15	\$28,900	25	\$25,900
7	\$37,900	16	\$28,900	28	\$29,900
8	\$34,900	17	\$32,900		